

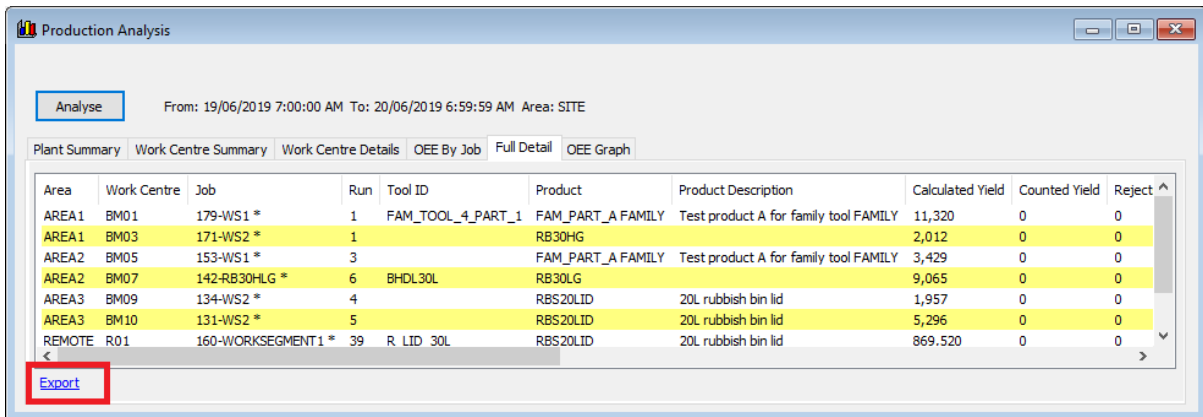
Exporting Data to Excel

August 2019

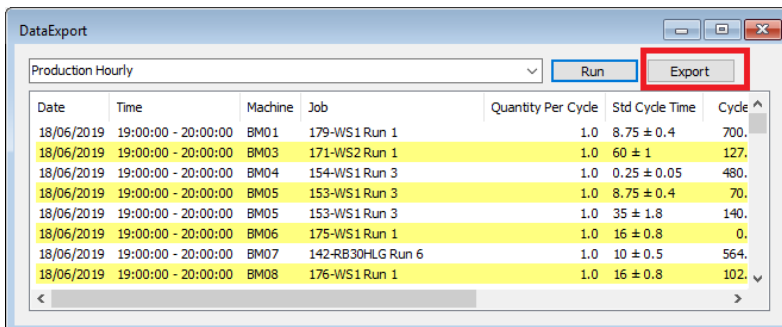
Many of the data lists in AspectPL can be exported as a CSV file and used in Excel for custom reporting or number crunching.

This goes for most of the lists in Job Update, OEE tabs, Data Extracts and many reports.

Use the “export” links at the bottom left of lists (OEE “Full detail” tab is particularly useful for mass job data):



Use the Export button in Data Extracts (after running!):



Use the Export menu item in Reports (note, not all reports allow this):

